

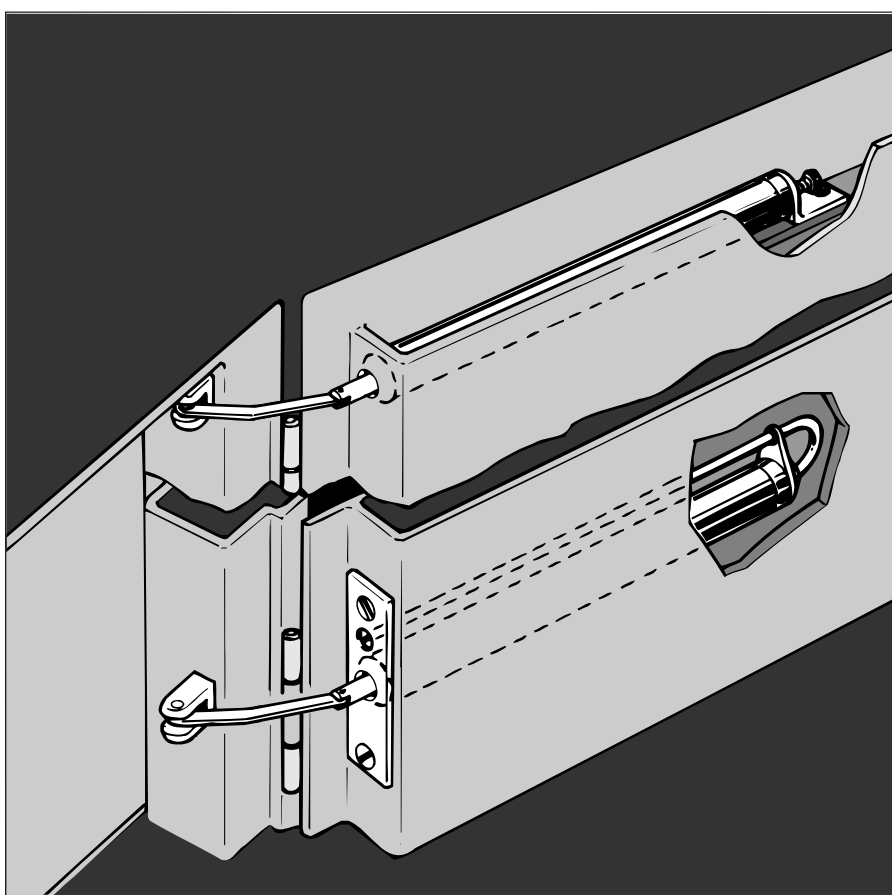
ATS Concealed Tube Doorcloser

The DICTATOR ATS Concealed tube doorcloser is especially designed for lift swing doors. They can be used on both left and right hand doors up to 2400 mm height.

The integrated spring closes the door, with the speed being controlled hydraulically. The closing speed is adjustable to enable optimal results with different doors.

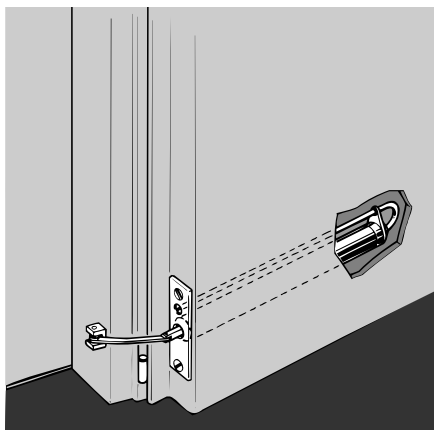
An integrated safety valve prevents any damage to the doorcloser should the door be forced closed.

One of the main advantages of the ATS concealed tube doorclosers is that when they are installed they are totally concealed. They can also be retro-fitted.



How to choose the right ATS concealed tube doorcloser:

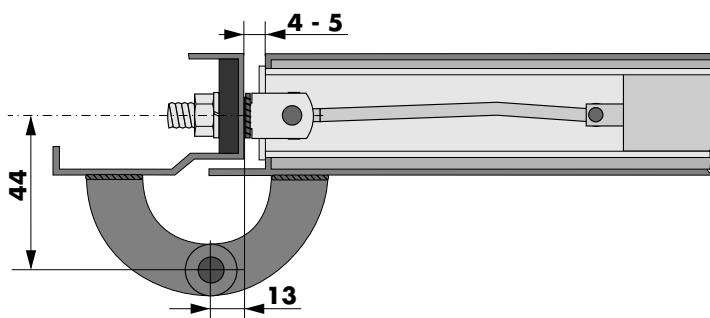
Door hinge	Door Width [mm]	Door weight [kg]	Door leaf [mm] (inside dimension)	ATS-model
pivot hinge	700 - 900	60 - 70	larger than 30	ATS 500/30
pivot hinge	700 - 900	60 - 70	larger than 35	ATS 500/35
pivot hinge	900 - 1200	100 - 110	larger than 30	ATS 600/30
pivot hinge	900 - 1200	100 - 110	larger than 35	ATS 600/35
construction hinge	700 - 900	60 - 70	larger than 30	ATS 500/30 K
construction hinge	700 - 900	60 - 70	larger than 35	ATS 500/35 K
construction hinge	900 - 1200	100 - 110	larger than 30	ATS 600/30 K
construction hinge	900 - 1200	100 - 110	larger than 35	ATS 600/35 K



ATS Concealed Tube Doorcloser with Front Plate For lift doors with pivot hinges

The ATS Concealed tube doorcloser can be fitted to lift swing doors with pivot hinges once a suitably sized hole has been drilled into the door - preferably near one of the hinges.

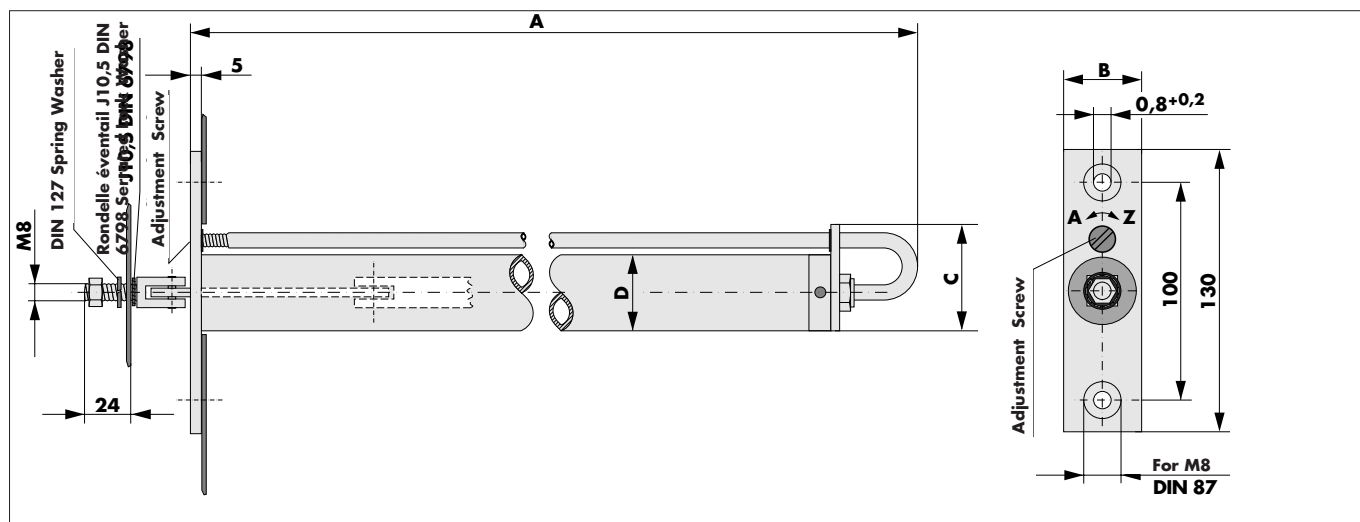
Advice: Please observe the following distances to the pivot of the door and between door and frame as well as the installation instructions on page 01.022.00.



Technical Data

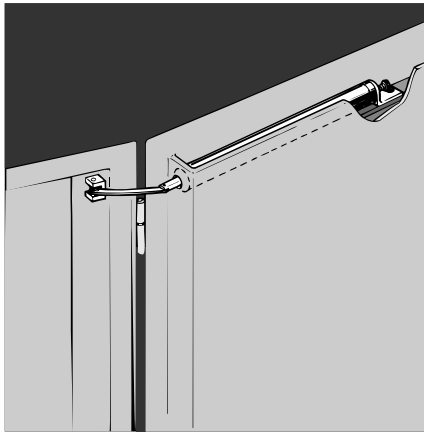
	ATS 500/30 A	ATS 500/35 A	ATS 600/30 A	ATS 600/35A
Length A [mm]	500	500	550	550
Cylinder D [mm]	Ø 29	Ø 34	Ø 29	Ø 34
Front plate B [mm]	30	35	30	35
Rear plate C [mm]	47	49	47	49
Closing force (0°) [N]	12	12	18	18
Opening force (0° - 90°) [N]	20 - 30	20 - 30	30 - 40	30 - 40
Closing time (90° - 0°) [sec]	3 - 4	3 - 4	3 - 4	3 - 4
Max. opening angle	165°	165°	165°	165°

Dimensions



Order Information

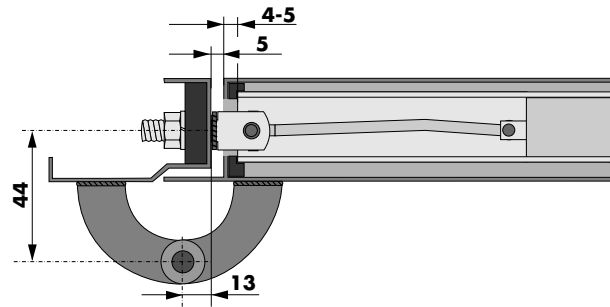
ATS 500/30 A Concealed tube doorcloser	Part no. 400 200
ATS 500/35 A Concealed tube doorcloser	Part no. 400 203
ATS 600/30 A Concealed tube doorcloser	Part no. 400 220
ATS 600/35 A Concealed tube doorcloser	Part no. 400 223



Easily installed ATS-O Concealed Tube Doorcloser

The ATS-O Concealed tube doorcloser can be fitted to lift swing doors with pivot hinges when there is a suitable groove at the top of the door in which to fit the tube door closer.

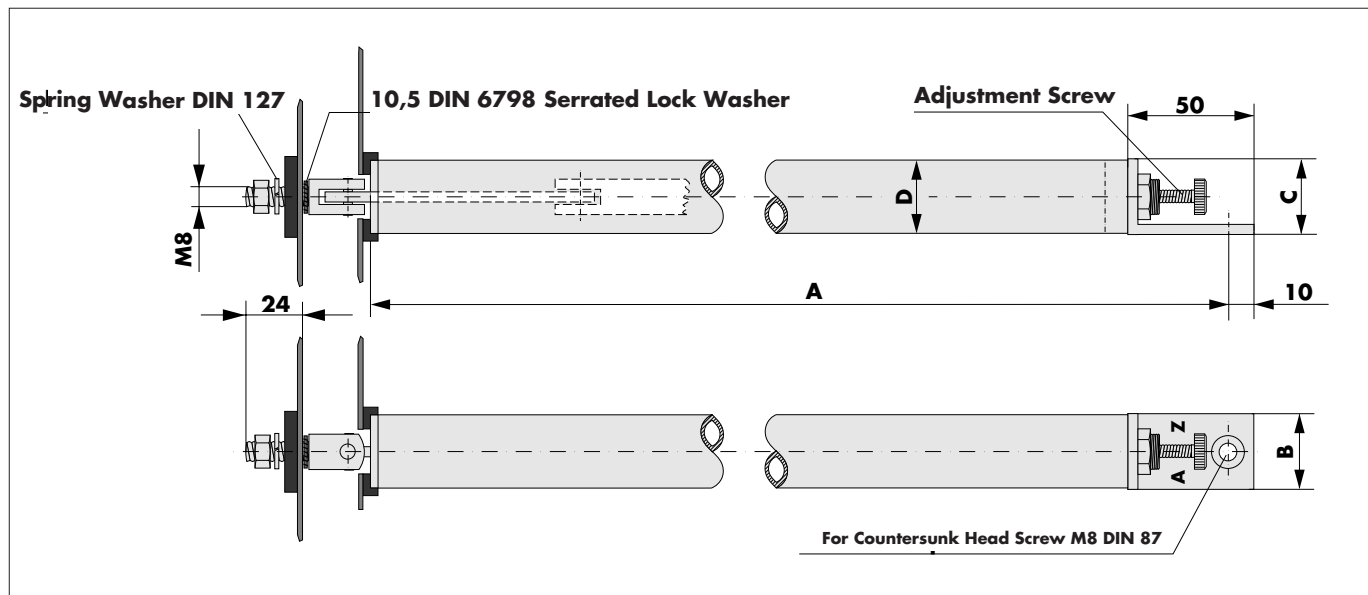
Advice: Please observe the following distances to the pivot of the door and between door and frame as well as the installation instructions on page 01.022.00.



Technical Data

	ATS 500/30-O	ATS 500 35-O	ATS 600/30-O	ATS 600/35-O
Length A [mm]	500	500	551	551
Cylinder D [mm]	Ø 29	Ø 34	Ø 29	Ø 34
Bracket B/C [mm]	30/30	35/35	30/30	35/35
Closing force (0°) [N]	12	12	20	20
Opening force (0° - 90°) [N]	20 - 30	20 - 30	30 - 40	30 - 40
Closing time (90° - 0°) [sec]	3 - 4	3 - 4	3 - 4	3 - 4
Max. opening angle	165°	165°	165°	165°

Dimensions



Order Information

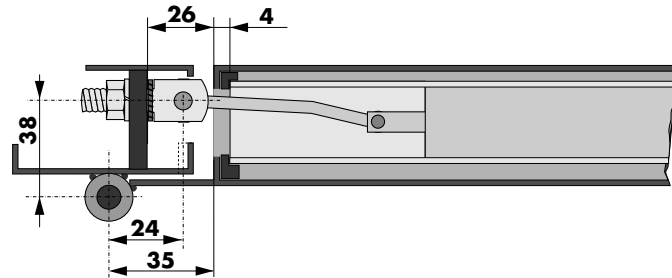
ATS 500/30 O, A Concealed tube doorcloser	on request
ATS 500/35 O, A Concealed tube doorcloser	Part no. 400 204
ATS 600/30 O, A Concealed tube doorcloser	on request
ATS 600/35 O, A Concealed tube doorcloser	Part no. 400 224



Easily Installed ATS-KO Concealed Tube Doorcloser For lift doors with construction hinges

The ATS-KO concealed tube doorcloser can be fitted to lift swing doors with construction hinges when there is a suitable groove at the top of the door in which to fit the tube door closer.

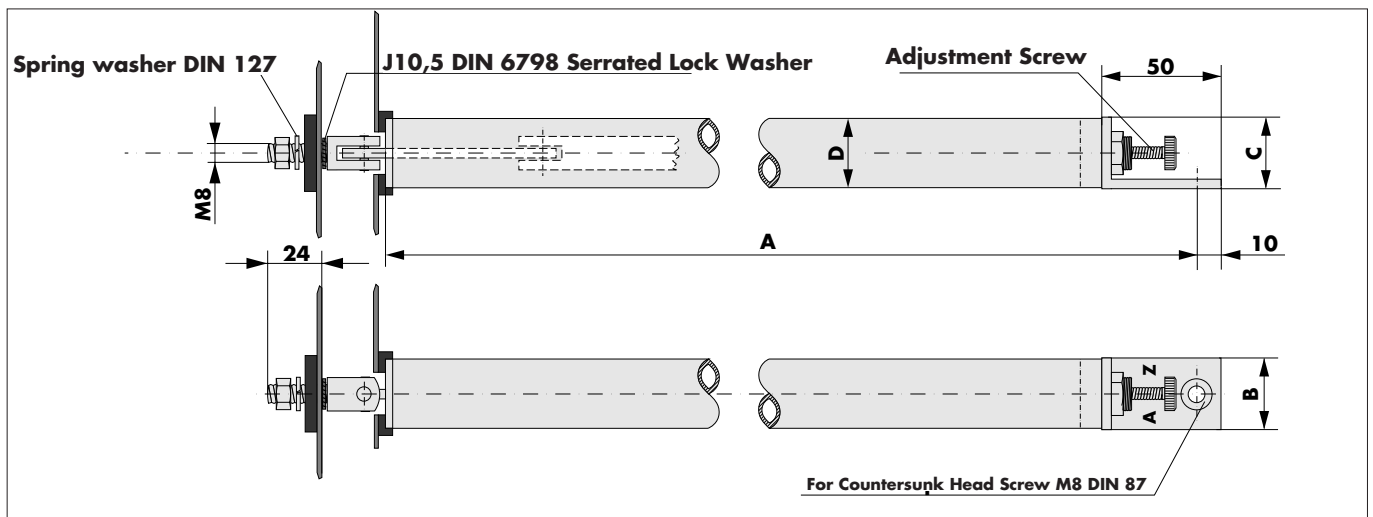
Advice: Please observe the following distances to the pivot of the door and between door and frame as well as the installation instructions on page 01.022.00.



Technical Data

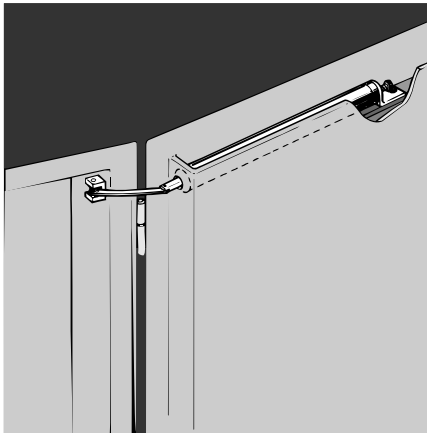
	ATS 500/30-KO	ATS 500 35-KO	ATS 600/30-KO	ATS 600/35-KO
Length A [mm]	500	500	551	551
Cylinder D [mm]	Ø 29	Ø 34	Ø 29	Ø 34
Bracket B/C [mm]	30/30	35/35	30/30	35/35
Closing forces (0°) [N]	12	12	20	20
Opening force (0° - 90°) [N]	20 - 30	20 - 30	30 - 40	30 - 40
Closing time (90° - 0°) [sec]	3 - 4	3 - 4	3 - 4	3 - 4
Max. opening angle	120°	120°	120°	120°

Dimensions



Order Information

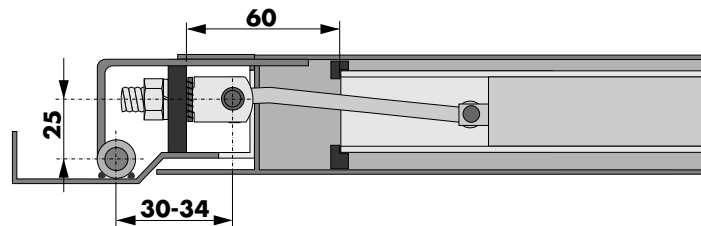
ATS 500/30 KO, A Concealed tube doorcloser	Part no. 400 202
ATS 500/35 KO, A Concealed tube doorcloser	Part no. 400 206
ATS 600/30 KO, A Concealed tube doorcloser	Part no. 400 222
ATS 600/35 KO, A Concealed tube doorcloser	Part no. 400 226



Easily installed ATS-O Concealed Tube Doorcloser For lift doors with pivot hinges

ATS 400-O and ATS 800-O Concealed tube doorclosers can be fitted to lift swing doors with hinges in between the door and frame when there is a suitable groove at the top of the door in which to fit the tube door closer.

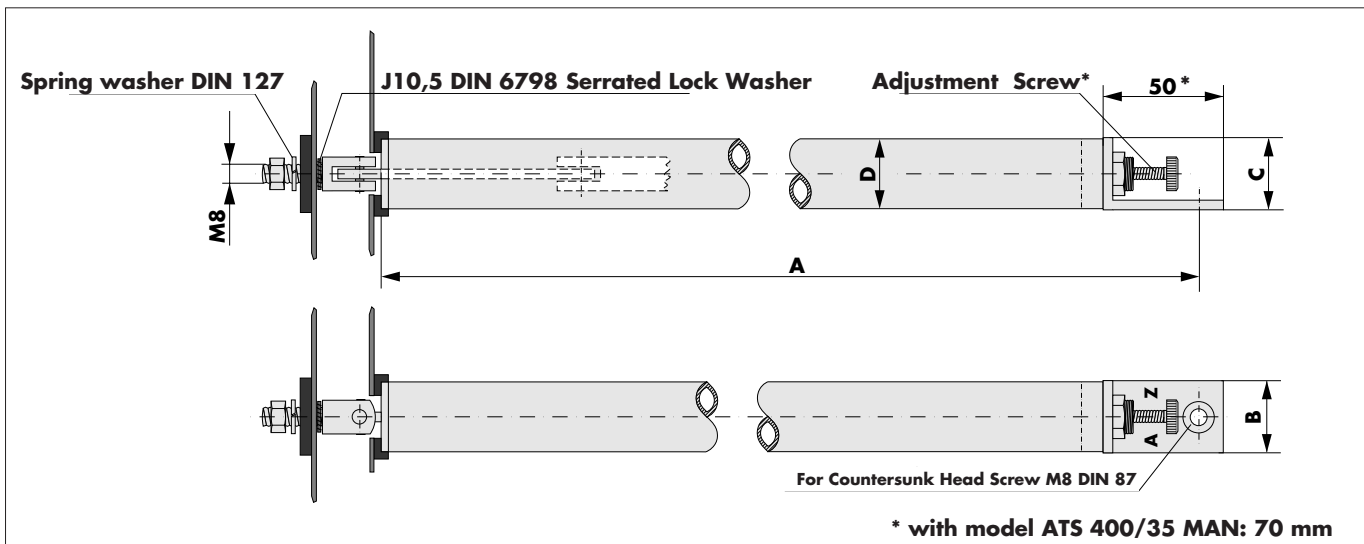
Advice: Please observe the following distances to the pivot of the door and between door and frame as well as the installation instructions on page 01.022.00.



Technical Data

	400/35-O	400 35-AK	400/35-KL	400/35-MAN*	800/35-OA
Length A [mm]	500	420	320	500	551
Cylinder D [mm]	Ø 34	Ø 34	Ø 34	Ø 34	Ø 34
Bracket B/C [mm]	34/34	34/34	34/34	34/34	34/34
Closing force (0°) [N]	12	12	12	18	18
Opening force (0°-90°) [N]	20 - 30	20 - 30	20 - 30	30 - 40	30 - 40
Closing time (90°-0°) [sec]	3 - 4	3 - 4	3 - 4	3 - 4	3 - 4
Max. opening angle	110°	110°	110°	110°	110°

Dimensions



Order Information

ATS 400/35 O, A Concealed tube doorcloser	Part no. 400 010
ATS 400/35 O, AK Concealed tube doorcloser (short version)	Part no. 400 011
ATS 400/35 O, KL Concealed tube doorcloser	Part no. 400 014
ATS 400/35 O, MAN Concealed tube doorcloser	Part no. 400 013
ATS 800/35 O,A Concealed tube doorcloser	Part no. 400 012