

GEZE TS 5000 L-E-ISM

Overhead door closer for double-leaf doors,
with integrated mechanical closing sequence control
and electromechanical hold-open on both sides,
standard mounting on opposite hinge side / door mount

Product features

- ▶ System GEZE TS 5000 L-E-ISM comprising:
 - two overhead door closer TS 5000 L with adjustable closing force size 2-6 EN 1154 (at narrow fixed leaves alternatively TS 3000 V)
 - combined with E-ISM guide rail BG with integrated mechanical closing sequence control certified according to EN 1158
 - and electromechanical hold-open on both sides according to EN 1155, for mounting on opposite hinge side
- ▶ Electromechanical hold-open in guide rail, hold-open angle infinitely variable between 80°-130°
- ▶ Hold-open position can be overridden
- ▶ The hold-open can be adjusted and therefore it may even be disabled
- ▶ With smoke switch control unit GEZE RSZ 5 and RSZ 6 approved by the DIBt

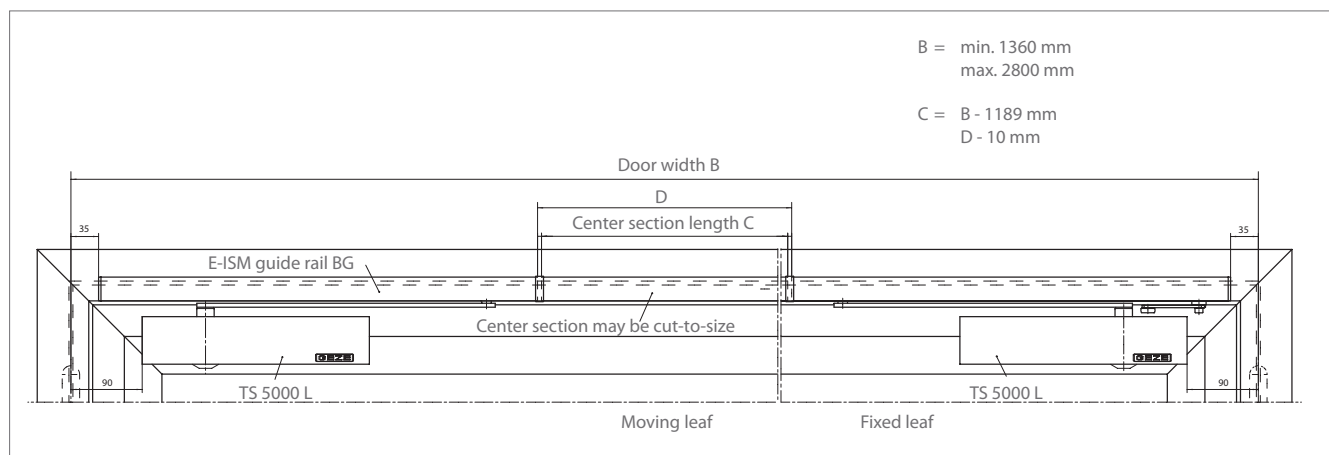
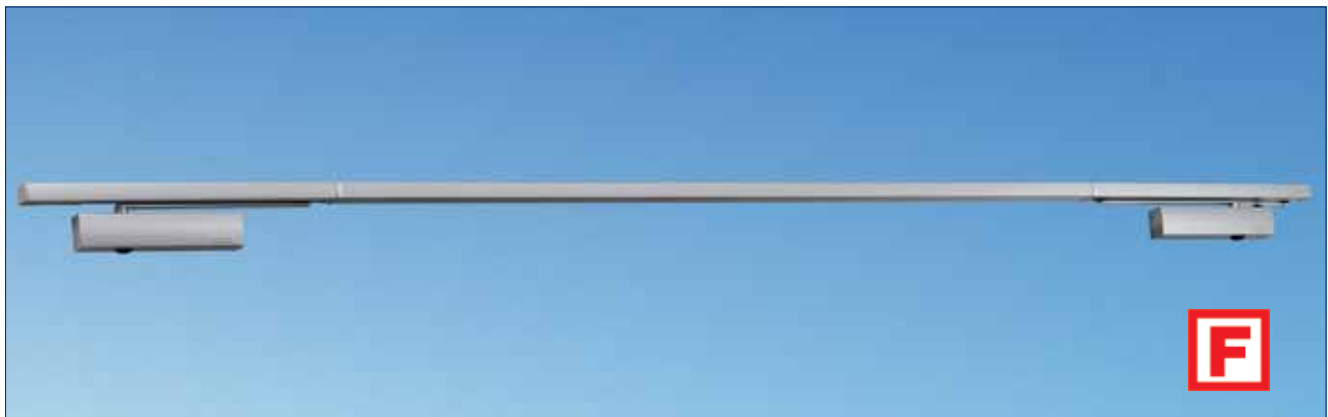


Fig. 76-1

Specification text

GEZE Overhead door closer system TS 5000 L-E-ISM 24 V DC, 2 x 100 mA, to be mounted to smoke and fire doors, according to EN 1158, size 2-6, with continuous guide rail BG, overall height 30 mm, with integrated mechanical closing sequence control, with electromechanical hold-open, infinitely variable between approx. 80° and 130° to an exact position according to EN 1155, hold-open position can be overridden, adjustable from front: closing force according to EN size 2-6, closing speed and latching action, with visual size indicator, mounting on opposite hinge side / door mount, with mounting plate

Colour:

- () silver
- () dark bronze
- () white
- () RAL ...

Note:

The system GEZE TS 5000 L-E-ISM has Building Regulation approval for several different actuation devices.

Notice guidelines of DIBt.

Application

- For double-leaf doors, leaf width max. 1400 mm
- Smallest door width ginge clearance „b“ = 1360 mm
Largest door width ginge clearance „b“ = 2800 mm
- Also suitable for leafs of different widths,
minimum width of fixed leaf = 380 mm
- For smoke and fire doors
(country-specific regulations are to be considered)
- Can be used for right and left hand doors without adjustment

Standard version/package

System GEZE TS 5000 L-E-ISM comprising:

2 pcs. overhead door closer TS 5000 L complete with mounting material and fitting template (mounting plate not included)
still needed: continuous E-ISM guide rail BG with two levers, integrated mechanical closing sequence control and electro-mechanical hold-open on both sides

Mounting on opposite hinge side / door
mount with E-ISM guide rail BG

Mounting with mounting plate

Example showing the mounting of
system GEZE TS 5000 L-E-ISM on a fire
door, see Fig. 76-1 and Fig. 78-1

Mounting plate, 5 mm thick, with
drill-hole pattern as per DIN EN 1154
supplement 1, see Fig. 78-2

Mounting dimensions

right hand door = moving leaf

left hand door = fixed leaf,

see Fig. 78-3

left hand door = moving leaf

right hand door = fixed leaf,

see Fig. 78-4

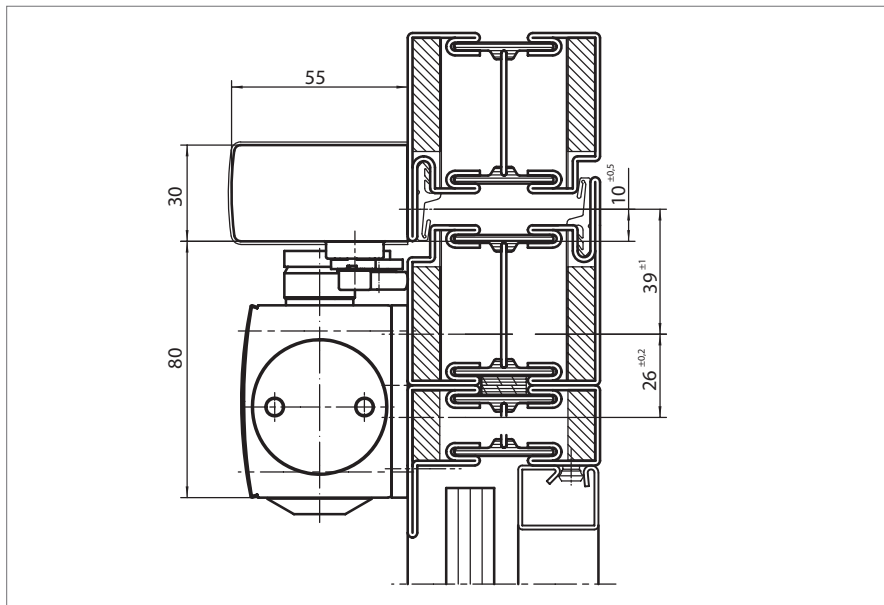


Fig. 78-1

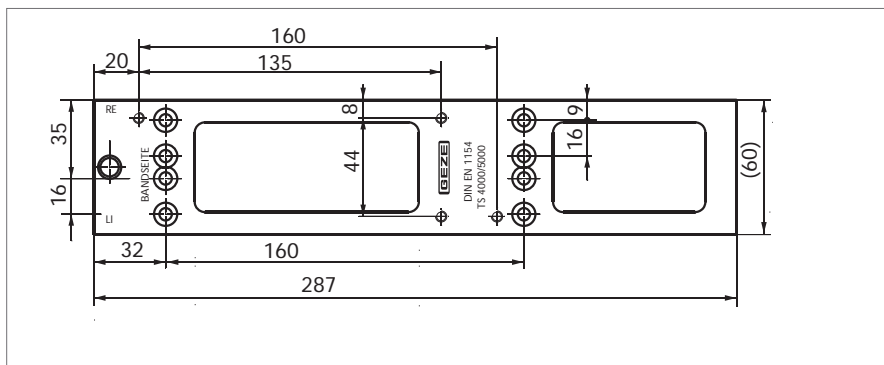
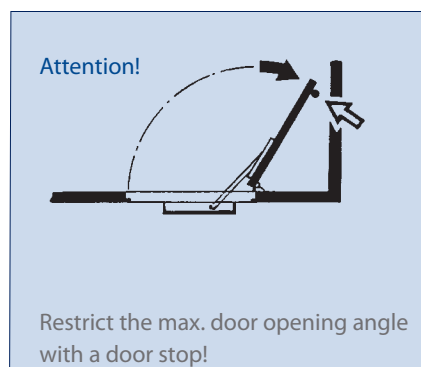


Fig. 78-2

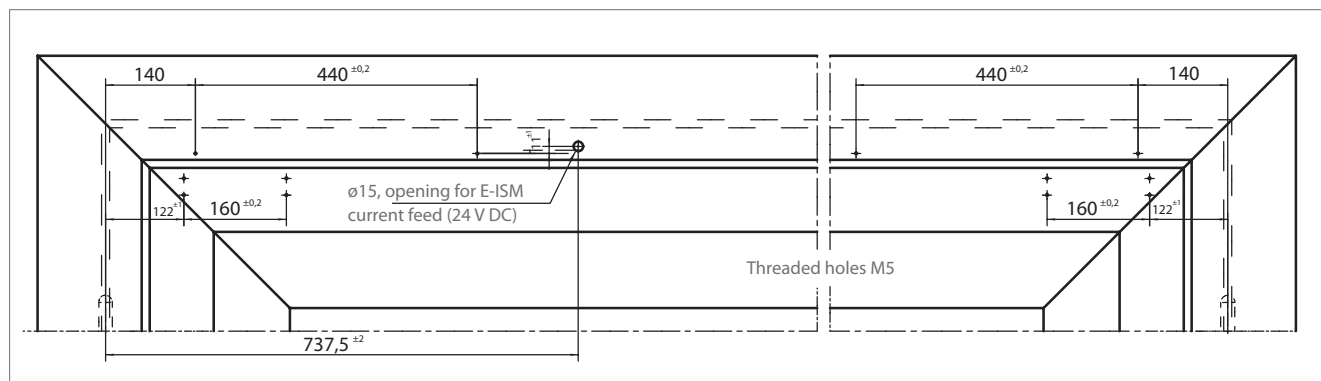


Fig. 78-3

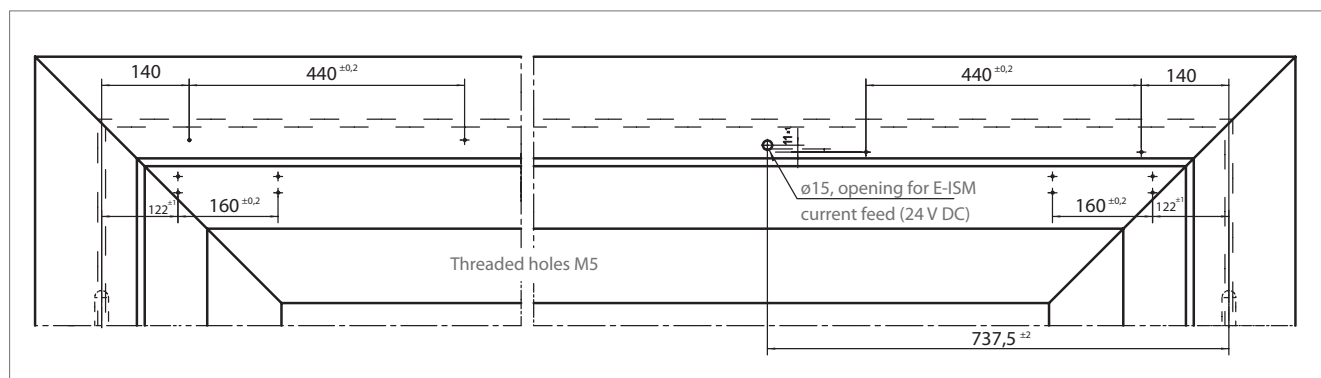


Fig. 78-4

Electrical installation

The system GEZE TS 5000 L-E-ISM must be connected to a 24 V DC direct voltage supply to allow the door to be held open.

Function

- ▶ Voltage applied to guide rail
= door held open
- ▶ No voltage applied or switched off
= door not held open and closes automatically
- ▶ The door can be closed manually at any time regardless of whether or not voltage is being applied.

Electrical data

- ▶ Operating voltage 24 V DC $\pm 10\%$
- ▶ Connected load 200 mA
- ▶ Max. permissible residual ripple 20%
- ▶ Rating 100%
- ▶ Enclosure rating IP 43
(for interior use only)

Connection

The power supply cable (max. cross section 0,8 mm²) from the fire detector control unit (24 V DC) is fixed in the terminal of the guide rail

See the wiring diagram L-E-ISM, Fig. 79-1

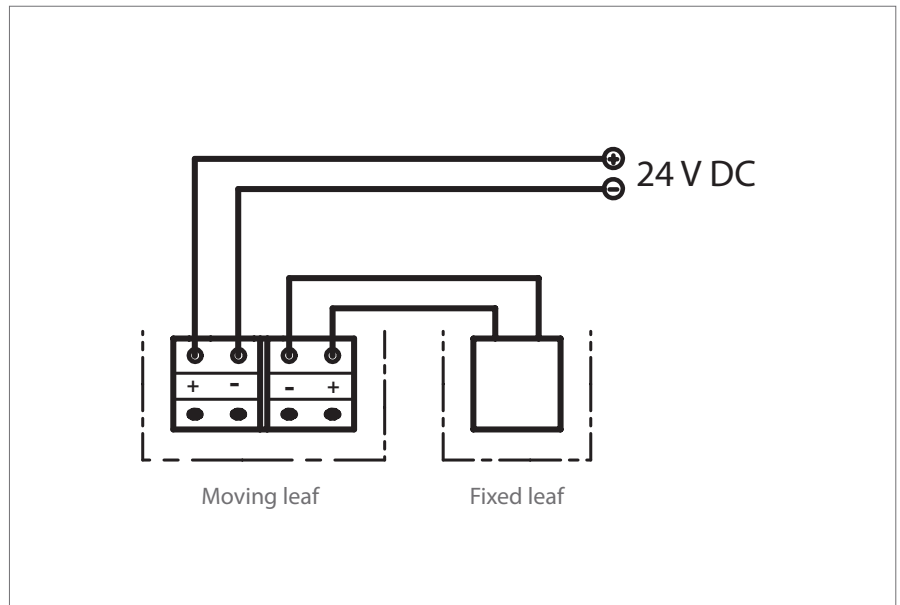


Fig. 79-1

GEZE TS 5000 L-E-ISM – Ordering information

Description	Finish	ID No.
GEZE TS 5000 L, size 2-6 Door closer without guide rail, without lever	silver	027351
	dark bronze	029399
	white RAL 9016	029400
	RAL colour	027352
E-ISM guide rail BG with integrated mechanical closing sequence control and electromechanical hold-open on both sides, for mounting on opposite hinge side	silver	115608
	white RAL 9016	115609
	stainless steel effect ¹⁾	115610
	RAL colour	115611
Mounting material		
Mounting plate for closer without direct door mounting	silver	049185
	dark bronze	052351
	white RAL 9016	068627
	galvanised steel	057956
	RAL colour	029176
Mounting plate for E-ISM guide rail BG	silver	118704
	RAL colour	118705
Mounting bracket for E-ISM guide rail BG	silver	118706
	RAL colour	118707
Accessories		
Cover caps (only suitable for mounting on door leaf)	silver	067724
	dark bronze	067725
	white RAL 9016	067726
	polished brass	072698
	stainless steel	072696
	RAL colour	000756

¹⁾ finish stainless steel effect for dry rooms only