

# INSULATING LETTER-BOX SLOT

FOR METAL-, PVC-U AND WOODEN DOORS



# COLOURS AND LOOKS



EV1  
Natur



EV1  
Natural  
Aluminium



Medium  
Bronze



"Stainless"



RAL  
1247



EV2  
Champagne



RAL  
3003



EV3 Guld  
Mat



RAL  
3005



EV3 Guld  
Shiny



RAL  
9005



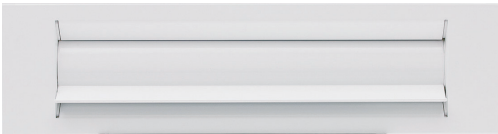
EV6



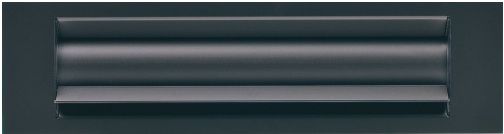
RAL  
9001



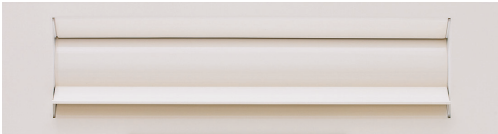
Amber 30



RAL  
9010

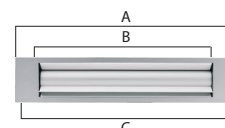
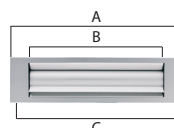
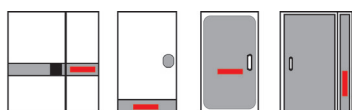


Dark  
Bronze



RAL  
9016

# SPECIFICATIONS



A - Front section  
B - Slot dimensions  
C - Milled front section

310 x 80 mm  
236 x 30 mm  
300 x 70 mm

400 x 80 mm  
325 x 30 mm  
389 x 70 mm

## EV1 anodized

Housing and spacing frame black	T60110000	T60210000
Housing and spacing frame white	T601B0000	T602B0000

## EV2 Champagne

Housing and spacing frame black	T60182000	T60282000
---------------------------------	-----------	-----------

## EV3

Housing and spacing frame black "matt"	T60183100	T60283100
--	-----------	-----------

## EV3

Housing and spacing frame black "blank"	T60183200	T60283200
---	-----------	-----------

## EV6

Housing and spacing frame black	T60186000	T60286000
---------------------------------	-----------	-----------

## Anodized "Stainless steel"

Housing and spacing frame black	T60184000	T60284000
Housing and spacing frame white	T601C4000	T602C4000

## Amber 30

Housing and spacing frame black	T60180003	T60280003
---------------------------------	-----------	-----------

## Medium bronze

Housing and spacing frame black	T60180004	T60280004
---------------------------------	-----------	-----------

## Dark bronze anodized

Housing and spacing frame black	T60130000	T60230000
---------------------------------	-----------	-----------

## RAL colours

RAL9005 Housing and spacing frame black	T60110005	T60210005
RAL9010 Housing and spacing frame black	T601E0000	T602E0000
RAL9016 Housing and spacing frame white	T601G0000	T602G0000

## Special colour powder coated

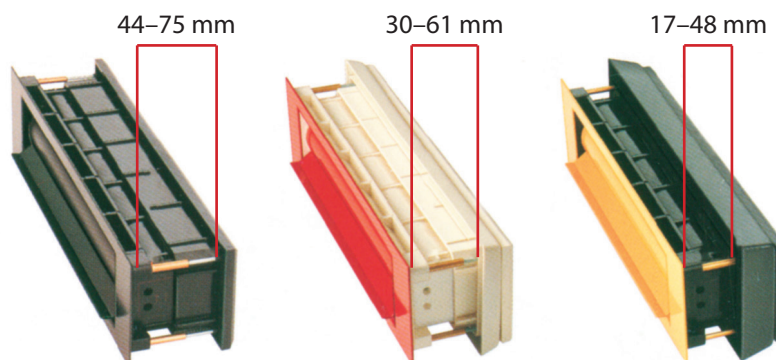
Housing and spacing frame white	T601J0000	T602J0000
Housing and spacing frame black	T60190000	T60290000

## Special colour anodized

Housing and spacing frame white	T601i0000	T602i0000
Housing and spacing frame black	T60180000	T60280000

**Standard RAL colours are: RAL 9001, RAL 9005, RAL 9010 and RAL 9016.**

*We have also the possibility to deliver letterbox slots in other colours. Please contact us to discuss your wishes!*



Door-leaf thickness 44–75 mm:

No Spacing frame needed

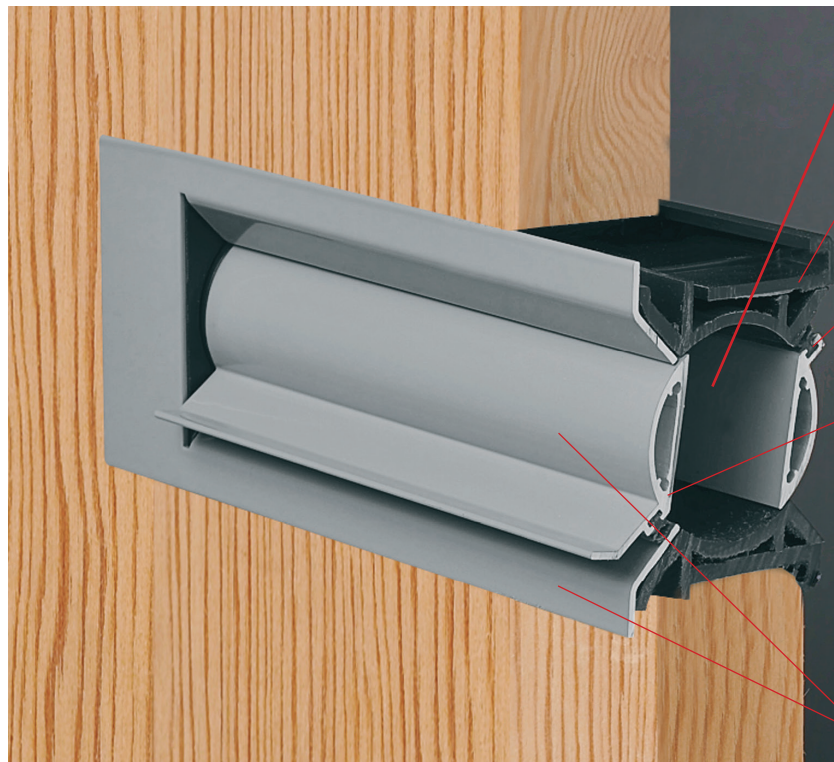
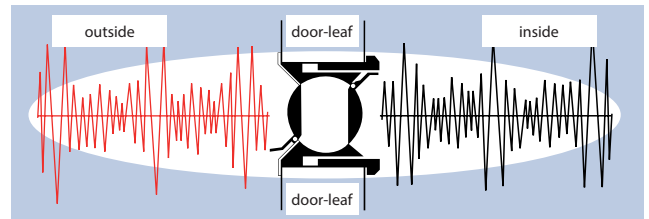
Door-leaf thickness 30–61 mm:	F14 white	T650A0000	T650A0004
Spacing frame F14 needed	F14 black	T650A0001	T650A0005
Door-leaf thickness 17–48 mm:	F27 white	T650A0002	T650A0006
Spacing frame F27 needed	F27 black	T650A0003	T650A0007

# INSULATING LETTER-BOX SLOT

FOR METAL-, PVC-U AND WOODEN DOORS

## Function principle

- The key feature of the WD Letter-box Slot is a rotating cylindrical section with a slot.
- The cylinder consists of two quarter-circular hollow-aluminium sections on plastic.
- 2 stainless steel restoring springs automatically return the cylinder to its closed position after use, thus creating a sealed air-chamber for first-class thermal insulation
- As the box unit is made largely of plastic, its resistance to cold is high.

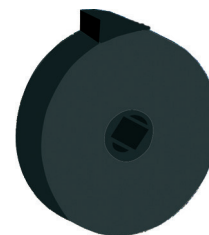


Rotating unit against draughts and dust. Self-closing.

Telescopic housing for door-blade thickness from 17 - 75 mm. (Use spacing frame for door-blades below 44 mm thickness).

Silicon sealing strip prevents draughts and reduces noise.

When the slot is closed, the cylinder becomes a sealed air-chamber providing excellent thermal insulation.



PVC bearings hold the two quartercircular aluminium sections in position and insulate them.

Front section and rotating unit. made of aluminium.

## Rotating cylindrical unit with insulating air-cushion protects against loss of warmth

Every penetration of a door's surface reduces its insulatory value. The WD Letter-Box Slot has a precision rotating open-sided hollow cylinder, which, when closed, forms a sealed air chamber. This provides an exceptionally effective barrier between the colder air outside and the warmer air within the building. This means:

- closed air-chamber (insulating air-cushion avoids loss of warmth).
- no air circulation (dust-proof).
- no draughts.
- noise reduction.

